

Illustration - Type - E

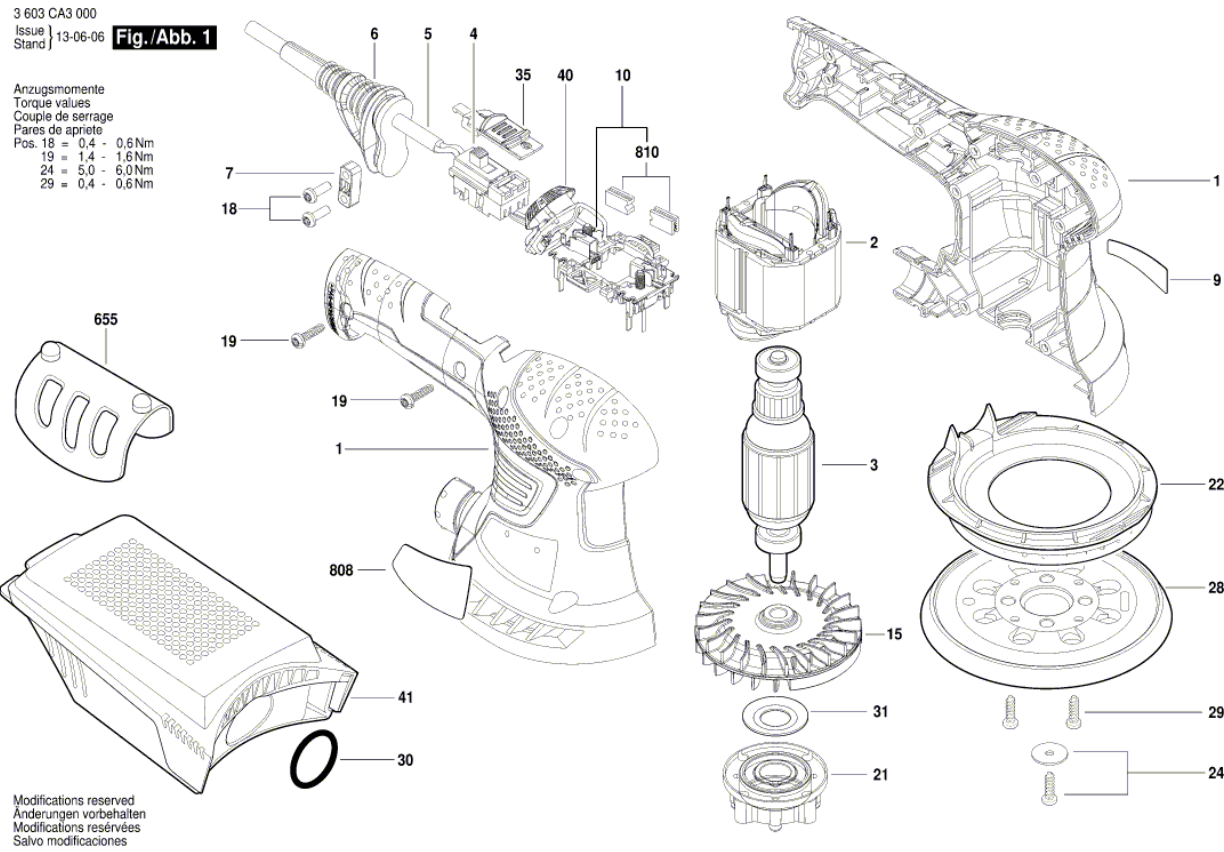
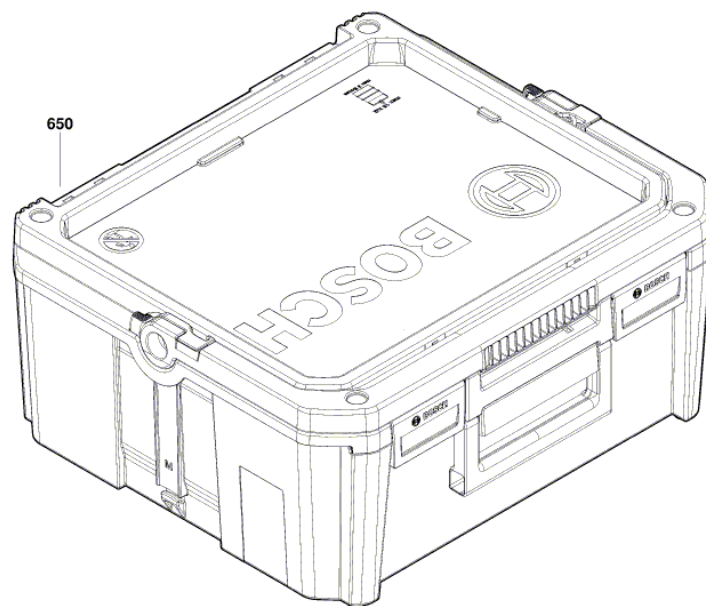


Illustration - Type - E

3 603 CA3 000
Issue | 23-03-23
Stand | **Fig./Abb. 2**



Modifications reserved
Änderungen vorbehalten
Modifications réservées
Salvo modificaciones

Spare parts list

Item	Part Number	Description	Illustration
1	2 609 004 166	Housing Section	1
2	2 609 005 423	Field	1
3	2 609 004 167	Armature 220-230V	1
4	1 607 200 254	Switch	1
5	2 604 460 259	Power supply cord EU 230V 2,7m 2 x 0,75mm H05 VV-F	1
6	2 609 003 080	Grommet Ø6,4-Ø7,2x76 MM	1
7	2 601 035 001	Cable Clip	1
9	2 609 004 179	Manufacturer's nameplate PEX 300 AE	1
10	2 609 004 170	Brush Holder	1
15	2 609 004 169	axial flow fan	1
18	2 603 490 022	Screw 4x16	1
21	2 609 006 535	Bearing Flange	1
22	2 609 004 914	Holder	1
24	2 610 918 116	Torx Oval-Head Screw	1
28	2 609 004 175	Sander Plate	1
29	2 610 386 516	Torx Oval-Head Screw M4x12	1
30	1 600 210 07J	O-Ring	1
31	2 609 004 690	Disc	1
35	2 609 004 171	Slider	1
40	1 607 233 419	Rpm Actuator	1
41	2 609 005 842	Dust container	1
655	2 609 004 646	Positioning Element	1
808	1 601 11A 2V7	Nameplate	1
810	2 609 000 246	Carbon-Brush Set	1
650	1 605 438 1FV	Carrying Case M	2